

---

# Scales and Keys Diagnostic Quiz

---

## ANSWER KEY

In this quiz, you'll see where your scale and key knowledge is at. Once you've finished the entire quiz, open the Answer Key (found on the website next to this file) and grade your work. If you get a passing score for that section, you can skip that material in the course (though review can never hurt!) If you get a lower than passing score, work through the course material indicated for that section. Watch the videos, do the drills and complete the worksheets to level up your knowledge in those key areas. Be thorough and diligent in your work! A solid grasp of this material is vital to succeeding in your college level music courses.

### SECTION 1) Major Scales

**Write out the following major scales. Check your clef!**

If your score is less than 4 out of 5, work through [Major Scales] on the course's site.

D major



2 Bb major



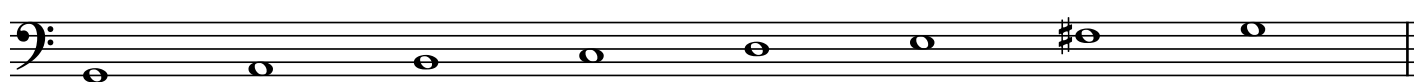
3 E major



4 Ab major



5 G major



## SECTION 2) Natural Minor Scales

**Write out the following minor scales. Check your clef!**

If your score is less than 4 out of 5, work through **[Minor Scales]** on the course's site.

A natural minor



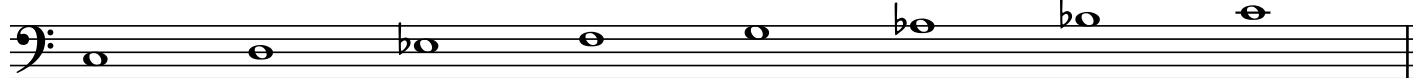
2 D natural minor



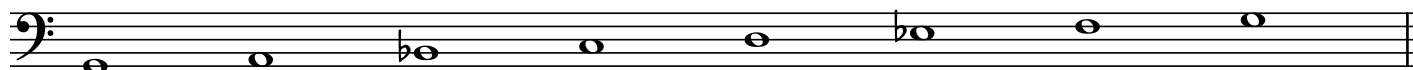
3 E natural minor



4 C natural minor



5 G natural minor



## SECTION 3) Scale Degrees

A key and scale degree is given. **Write down the note that matches the scale degree for that key.** Choose your octave! An example: If I see "C major, 5th", I would write a G as a whole note on the staff. Check your clef!

If your score is less than 6 out of 8, work through **[Scale Degrees]** on the course's site.

G major, 4th

D major, 3rd

G minor, 3rd

Eb major, 7th

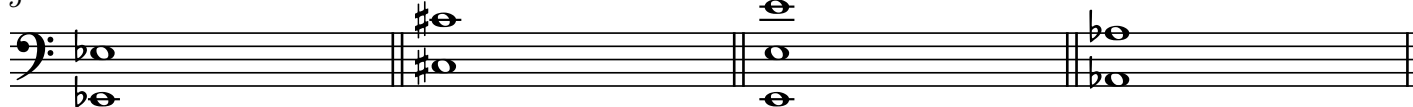


5 Ab major, 5th

B major, 2nd

C major, 3rd

F minor, 3rd

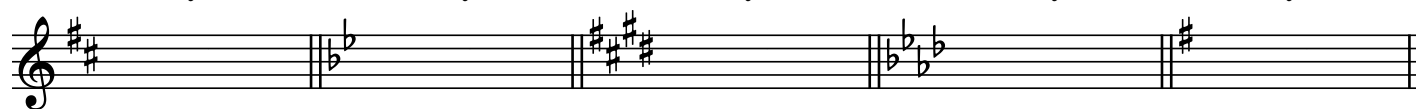


## SECTION 4) Key Signatures

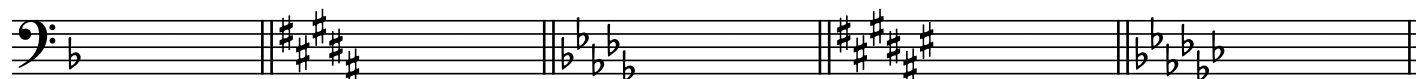
**For each major key given, write out the key signature.**

If your score is less than 8 out of 10, work through **[Recognizing and Writing Key Signatures]** on the course site.

D major      Bb major      E major      Ab major      G major



6      F major      B major      Db major      F# major      Gb major



## SECTION 5) Relative and Parallel Keys

**Write the name of the relative and parallel minor key for the following major keys.**

If your score is less than 4 out of 5, work through **[Minor Keys, Relative and Parallel Key]** on the course site.

	Parallel Minor	Relative Minor
1) C major	C minor	A minor
2) G major	G minor	E minor
3) Eb major	Eb minor	C minor
4) A major	A minor	F# minor
5) Ab major	Ab minor	F minor